

R7 - Removable Padlockable Bollard

Round bollard removable from base sleeve, with padlock catch and cover.

Standard Features

- Premium class design manufactured in Western Australia
- Bollard manufactured from 100ØD x 4mm WT round pipe
- Removal of bollard by lifting out of base sleeve, allows for storage of bollard separately
- Ideal for shallow ground excavation
- Corrosion resistant, galvanised steel, plastic primer & tough powdercoat

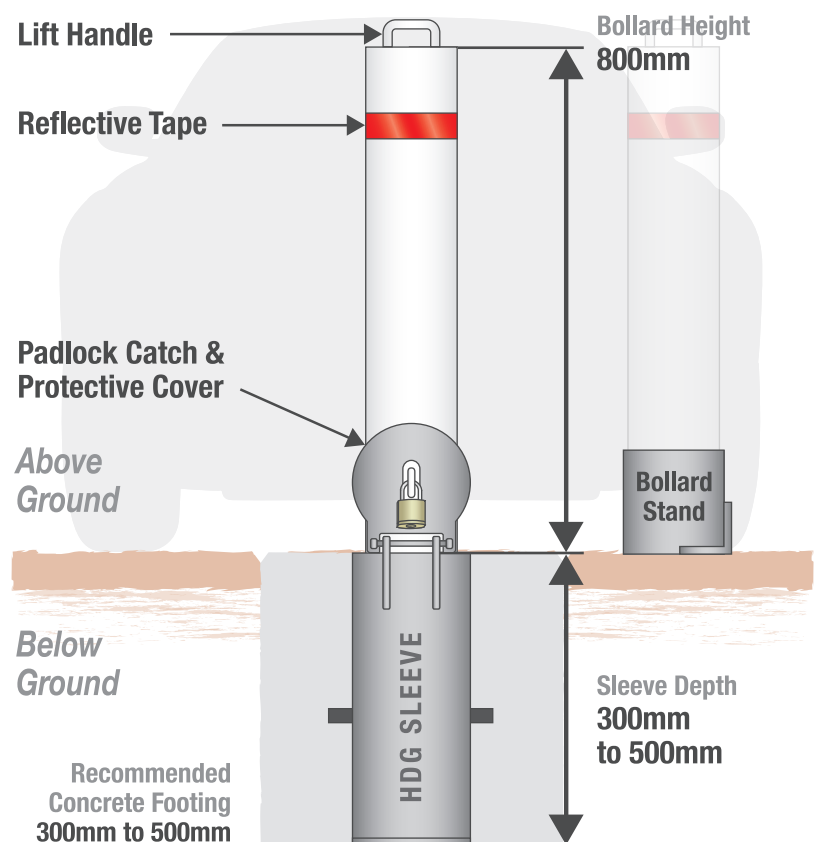
Optional Features

- Padlock sold separately - can be keyed to match existing keys
- Storage Stand for removed bollard
- Any height or diameter standard pipe (see pg. 2)
- Any standard powder coat colour or combination of body/cap
- Stainless Steel finish in grade 304 or 316
- Also available in R7 Pine Bollard (See Pine Bollard TDS)

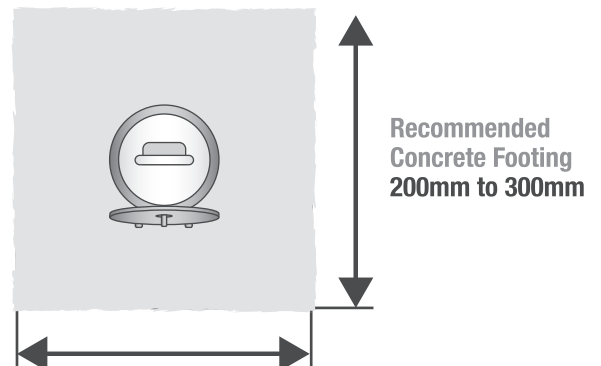
Australian Standards

- AS 1450 Steel Tube & AS4792 HDG Coating
- AS4506-2005 & AS3754-1990 Powder Coating
- AS 1627.4-2005 Abrasive Blasting
- AS 2700 Colour Standards

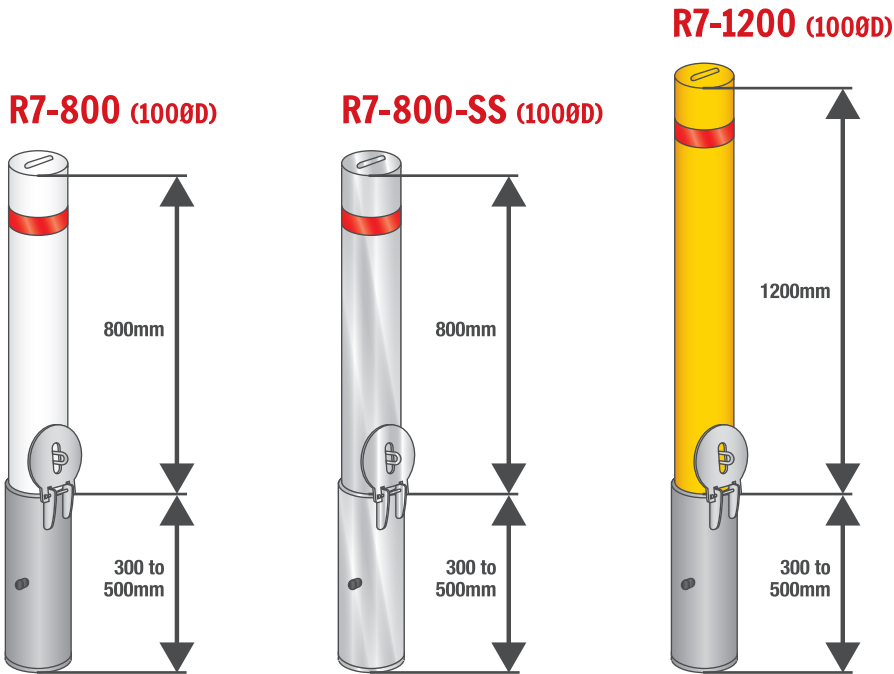
OVERVIEW



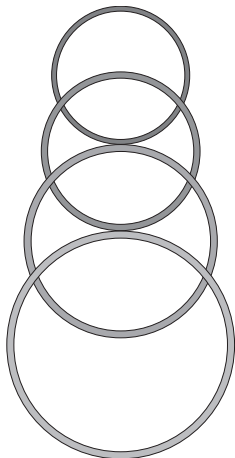
TOP VIEW



R7 - Removable Padlockable Bollard - Model Numbers



Part Numbers & Standard Stock Sizes



R7-XXX-100ØD
100ØD x 3.55mmWT

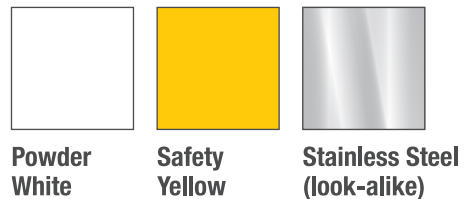
R7-XXX-115ØD
115ØD x 4.55mmWT

R7-XXX-140ØD
140ØD x 5mmWT

R7-XXX-165ØD
165ØD x 5mmWT

(*XXX = Bollard Height)

Available "Tough" Plastic Coatings
Stocked Standard Colours



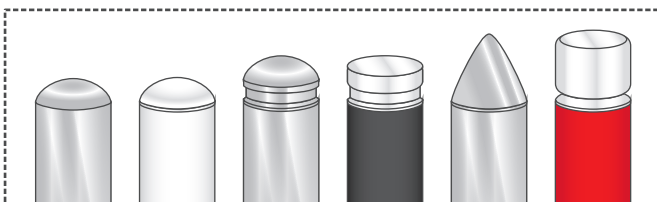
Powder White

Safety Yellow

Stainless Steel (look-alike)

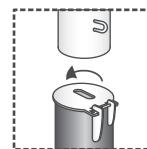
Also available in any standard Dulux® powder coat colour. View range at www.duluxpowder.com.au. Additional costs may apply.

Optional Decorative Aluminium Caps
Available in Polished or Powder Coated finishes

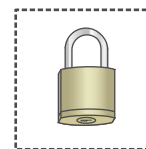


*Not all caps are available across all pipe sizes. Please enquire for more info.

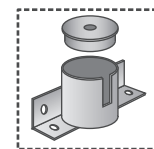
Operational Features



Cover closes once bollard is removed



Optional 6-Pin Key Padlock



Optional Bollard Storage Stand & Cover (R)

Additional finishes and sizing options also available upon request - ask our friendly staff for more information.